

### Installation

Make sure that the scanner has the correct cable to plug in the PC as below described:

- 1. USB cable Connection:**  
(Please use correct cable for the interface)  
**Reset Configuration to Defaults**

If you are unsure of the scanner configuration or have scanned the incorrect codes, please scan the "Default" barcode. This will reset the scanner to its factory defaults.

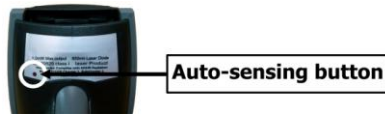


Default

- 2. PS2 cable connection :**  
Please read above "Default" first, and then set the output mode as Keyboard.(On the top right corner)
- 3. RS232 cable connection :**  
Please read above "Default" first, and then set the output mode as RS232.(On the top right corner)  
★If change the difference interface cable, after make the barcode setting "default & output mode". Need to re-plug the cable from PC to complete setting.
- 4. Auto-sensing setup (For LS6320 only )**

For some scanners have auto-sensing function. Press the auto-sensing function button shown on below photo. Default is ON.

\*Auto-sensing normally is ON. Press once is OFF, Press once again is ON.

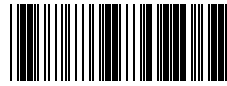
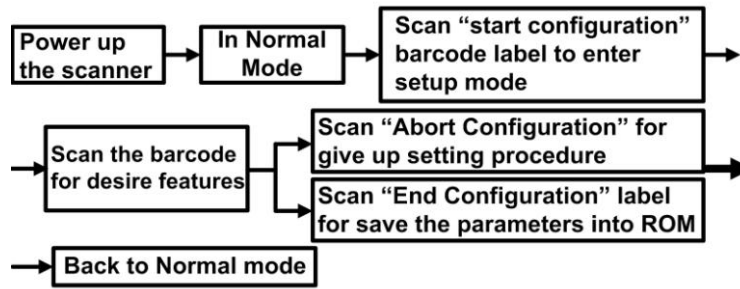


Do not read barcode at vertical degree.



In order scanner to decode properly, please make sure relocation the barcode from scanner window completely when reading same barcode.

### Barcode Configuration Method: (Flow chart for setup procedure :)



Abort Configuration



Start Configuration



End Configuration

### Multi-Interface Functions

<p><b>LOUDER</b></p> <p>MCB</p>	<p><b>SOUND LEVEL</b></p>	<p><b>MIDDLE</b></p> <p>MCG</p>
<p><b>LOWER</b></p> <p>MCH</p>		<p><b>SILENT</b></p> <p>MCI</p>
<p><b>LONG</b></p> <p>MFC</p>	<p><b>SOUND / LED CONTROL</b></p>	<p><b>MIDDLE</b></p> <p>MFB</p>
<p><b>SHORT</b></p> <p>MFA</p>		
<p><b>DOUBLE CHECK (ENABLE)</b></p> <p>KJB</p>	<p><b>DOUBLE CHECK</b></p>	<p><b>DOUBLE CHECK (DISABLE)</b></p> <p>KJA</p>
<p><b>SINGLE SCAN</b></p> <p>MBA</p>	<p><b>READING MODE</b></p>	<p><b>SINGLE SCAN NO TRIGGER</b></p> <p>MBB</p>

### Multi-Interface Functions

<p><b>OUTPUT MODE - KEYBOARD</b></p> <p>LDB</p>	<p><b>OUTPUT MODE</b></p>	<p><b>OUTPUT MODE - RS232</b></p> <p>LDC</p>
---	---------------------------	--

### Keyboard Language (For USB / PS2)

Scan the appropriate country code as below to program the keyboard for your country or language. As a general rule, the following characters are not supported by the scanner for countries other than the United States: @ | \$ # { } [ ] = / ' \ < > ~

<p><b>DENMARK</b></p> <p>LJH</p>	<p><b>FRENCH</b></p> <p>LJC</p>
<p><b>GERMANY</b></p> <p>LJE</p>	<p><b>HUNGARY</b></p> <p>LJL</p>
<p><b>JAPAN</b></p> <p>LJM</p>	<p><b>ITALIAN</b></p> <p>LJB</p>
<p><b>NORWEGIAN</b></p> <p>LJG</p>	<p><b>PORTUGAL</b></p> <p>LJK</p>
<p><b>SPANISH</b></p> <p>LJD</p>	<p><b>SWEDISH</b></p> <p>LJF</p>
<p><b>SWITZERLAND</b></p> <p>LJI</p>	<p><b>USA</b></p> <p>LJA</p>
<p><b>VIETNAM</b></p> <p>LJJ</p>	



Abort Configuration



Start Configuration



End Configuration

### Symbologies On/OFF - 1

**CODE 128 –  
ENABLE**



AFN

**CODE 128**

CODE 128 -  
DISABLE



AFM

CODABAR –  
ENABLE



AGN

**CODABAR**

**CODABAR -  
DISABLE**



AGM

INTERLEAVE  
25-ENABLE



AIL

**INTERLEAVE  
25**

**INTERLEAVE  
25-DISABLE**



AIK

INDUSTRIAL  
25-ENABLE



AJL

**INDUSTRIAL  
25**

**INDUSTRIAL 25 -  
DISABLE**



AJK

MATRIX 25-  
ENABLE



BAL

**MATRIX 25**

**MATRIX 25 -  
DISABLE**



BAK

CHINA POSTAGE  
ON



BBL

**CHINA  
POSTAGE**

**CHINA POSTAGE  
OFF**



BBK

### Symbologies On/OFF – 2

**UPC-A - ENABLE**



BCJ

**UPC-A**

UPC-A – DISABLE



BCI

**UPC-E - ENABLE**



BDN

**UPC-E**

UPC-E – DISABLE



BDM

**EAN-13 -  
ENABLE**



BEL

**EAN-13**

EAN-13 -  
DISABLE



BEK

**EAN-8 - ENABLE**



BFL

**EAN-8**

EAN-8 - DISABLE



BFK

**MSI - ENABLE**



BGJ

**MSI**

**MSI - DISABLE**



BGI

**PLESSEY-  
ENABLE**



BHJ

**PLESSEY**

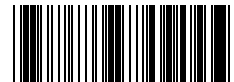
**PLESSEY-  
DISABLE**



BHI



Abort Configuration



Start Configuration



End Configuration

### Symbologies On/OFF – 3

CODE 11 -  
ENABLE



BIL

**CODE 11**

**CODE 11-  
DISABLE**



BIK

TELEPEN –  
ENABLE



BJL

**TELEPEN**

**TELEPEN -  
DISABLE**



BJK

CODE 39 – ON



ADP

**CODE 39**

**CODE 39- OFF**



ADO

**CODE 32 – ON**



AEL

**CODE 32  
ITALIAN  
PHARMACY**

CODE 32 – OFF



AEE

CODE 93 -  
ENABLE



AHL

**CODE 93**

**CODE 93-  
DISABLE**



AHK